




MAPA DOS MODELOS DE COMBUSTÍVEL DO CONCELHO DE CANTANHEDE

LIMITES ADMINISTRATIVOS

-  Concelho de Cantanhede
-  Limite de Concelho
-  Limite de Freguesia

Modelos de combustíveis

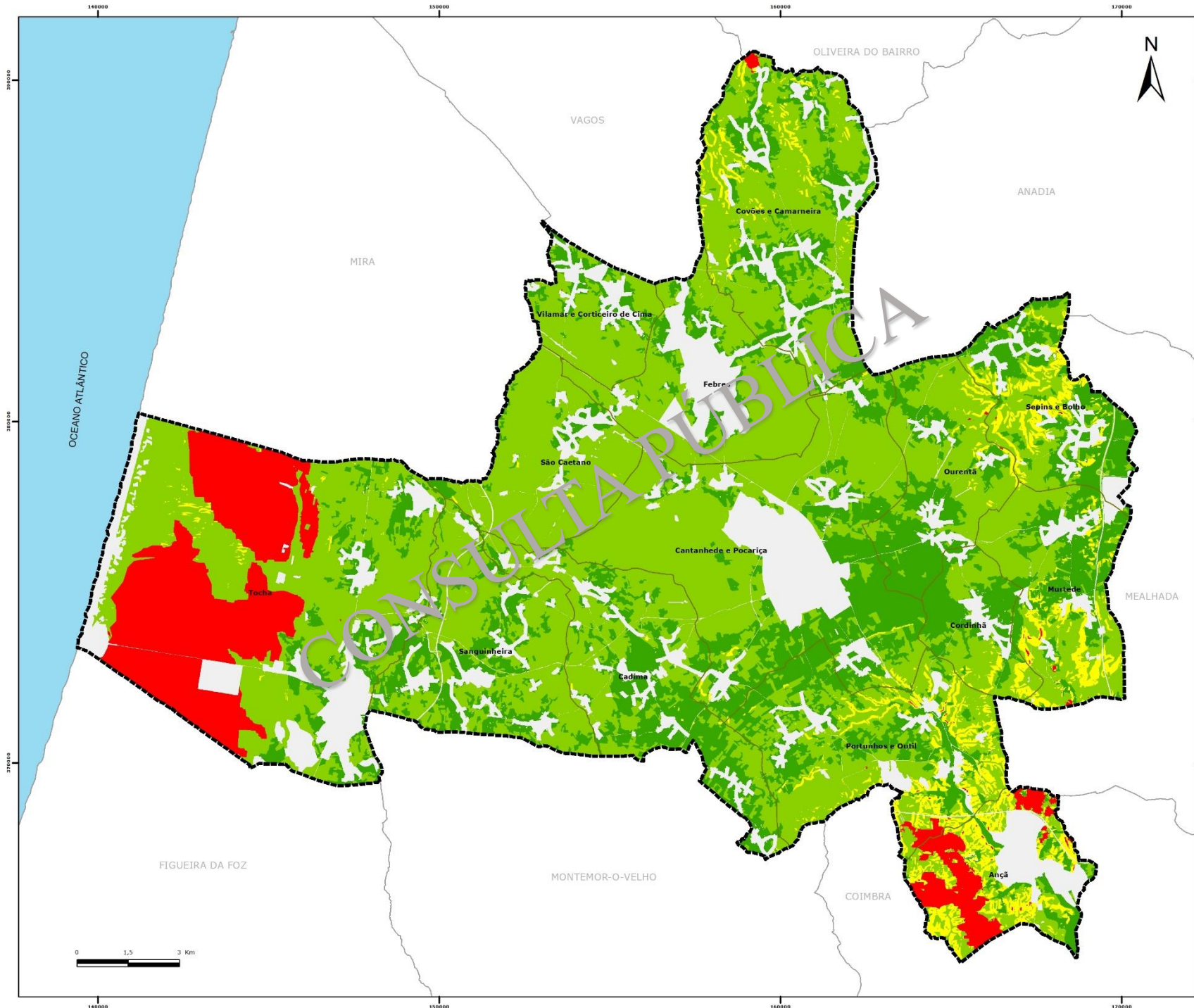
-  Modelo 1
-  Modelo 2
-  Modelo 4
-  Modelo 5
-  Modelo 6
-  Modelo 9

Sistema de coordenadas e de referência
 ETRS 1989 Portugal TM06
 Transversa de Mercator
 ETRS 1989

ELABORAÇÃO: Agosto de 2018




FONTE(S): IGP (2017)





MAPA DE PERIGOSIDADE DE INCÊNDIO DO CONCELHO DE CANTANHEDE

LIMITES ADMINISTRATIVOS

-  Concelho de Cantanhede
-  Limite de Concelho
-  Limite de Freguesia

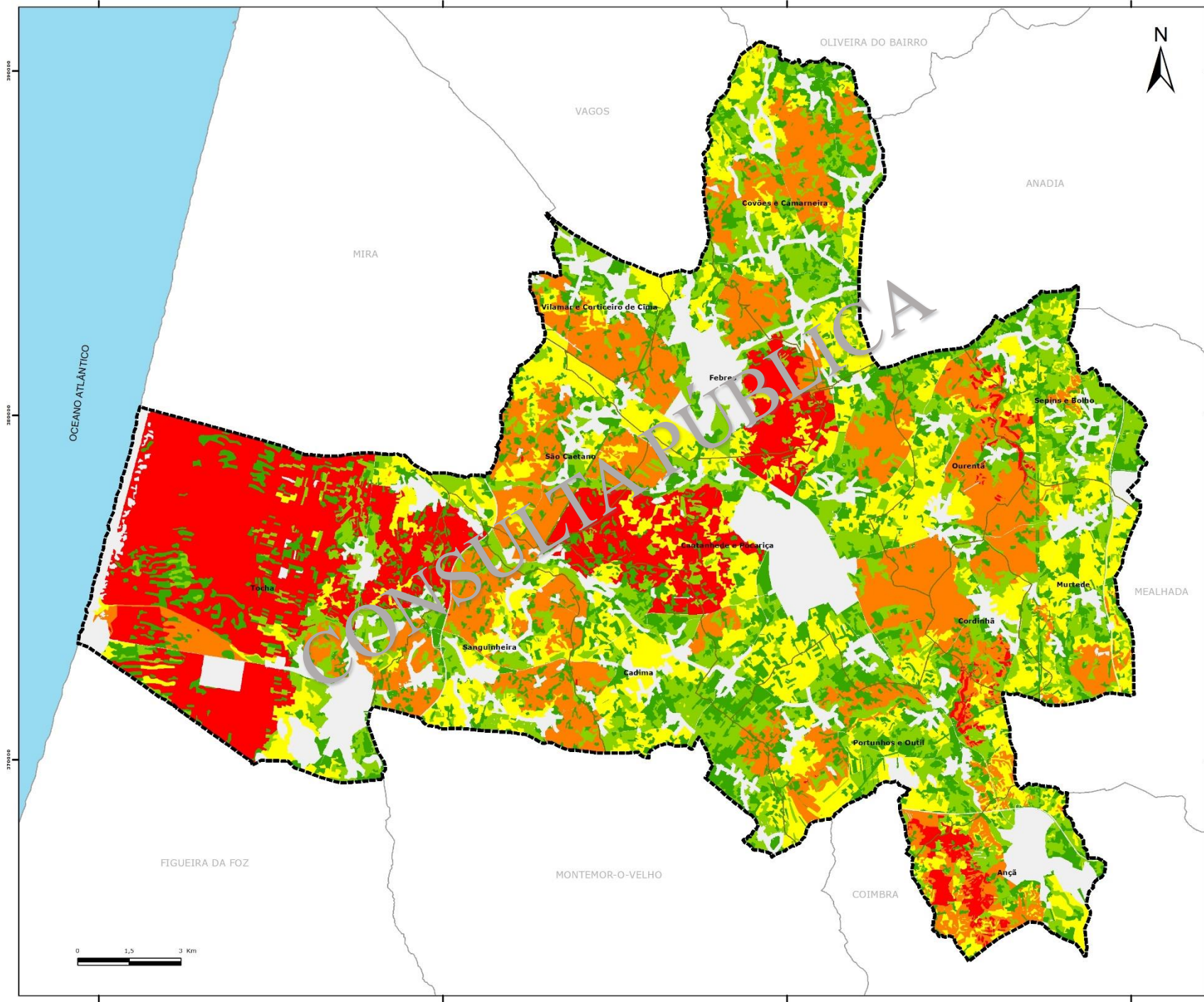
Perigosidade

-  Muito Baixa
-  Baixa
-  Média
-  Alta
-  Muito Alta
-  Nula ou N/A

Sistema de coordenadas e de referência
ETRS 1989 Portugal TM06
Transversa de Mercator
ETRS 1989




ELABORAÇÃO: Agosto de 2018

FONTE(S): IGP (2017)





MAPA DO RISCO DE INCÊNDIO DO CONCELHO DE CANTANHEDE

LIMITES ADMINISTRATIVOS

-  Concelho de Cantanhede
-  Limite de Concelho
-  Limite de Freguesia

Risco

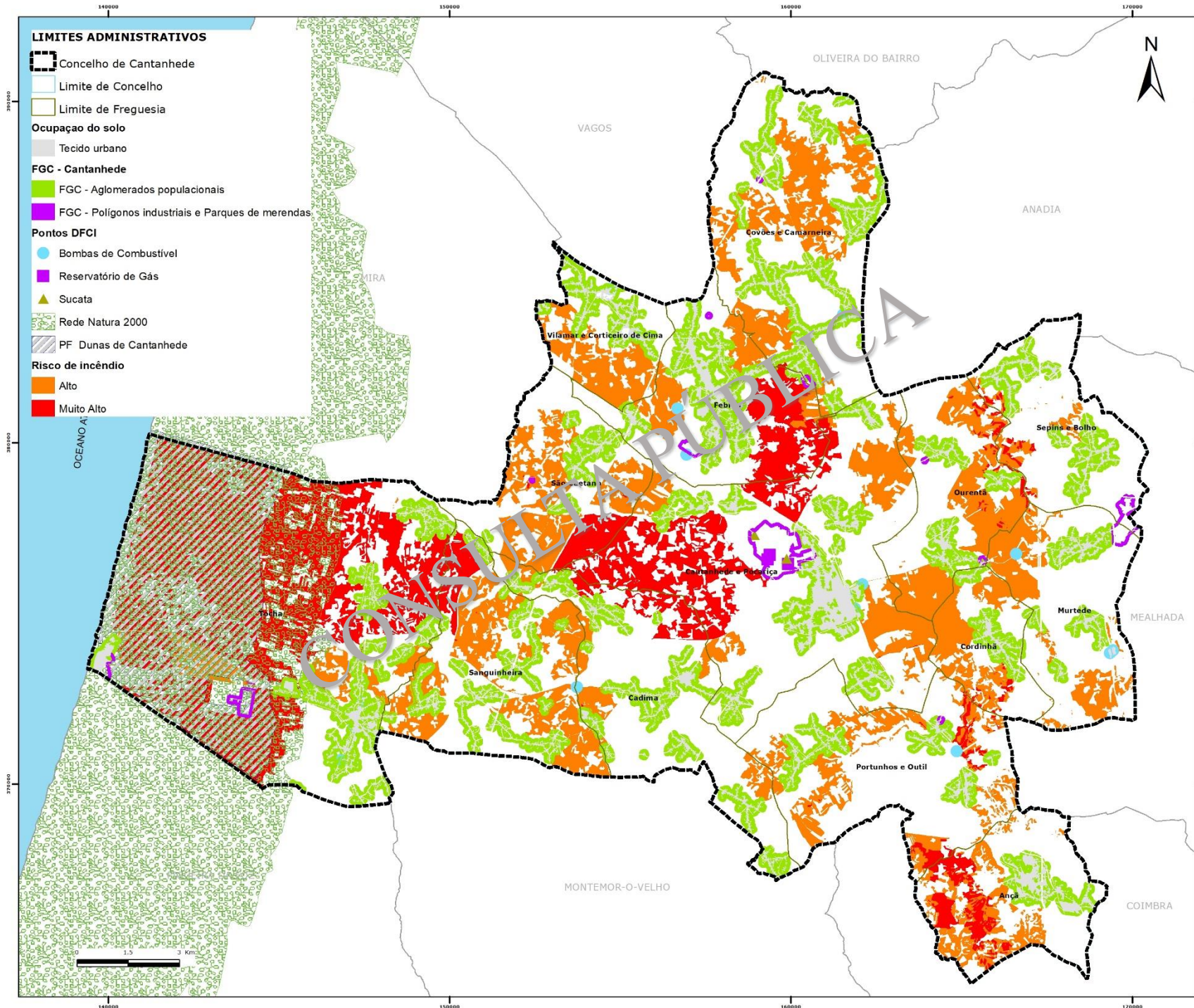
-  Muito baixo
-  Baixo
-  Médio
-  Alto
-  Muito Alto
-  Nula ou N/A

Sistema de coordenadas e de referência
 ETRS 1989 Portugal TM06
 Transversa de Mercator
 ETRS 1989

ELABORAÇÃO: Agosto de 2018

FONTE(S): IGP (2017)





MAPA DAS PRIORIDADES DE DEFESA DO CONCELHO DE CANTANHEDE

Sistema de coordenadas e de referência
 ETRS 1989 Portugal TM06
 Transversa de Mercator
 ETRS 1989

ELABORAÇÃO: Agosto de 2018

FONTE(S): IGP (2017)

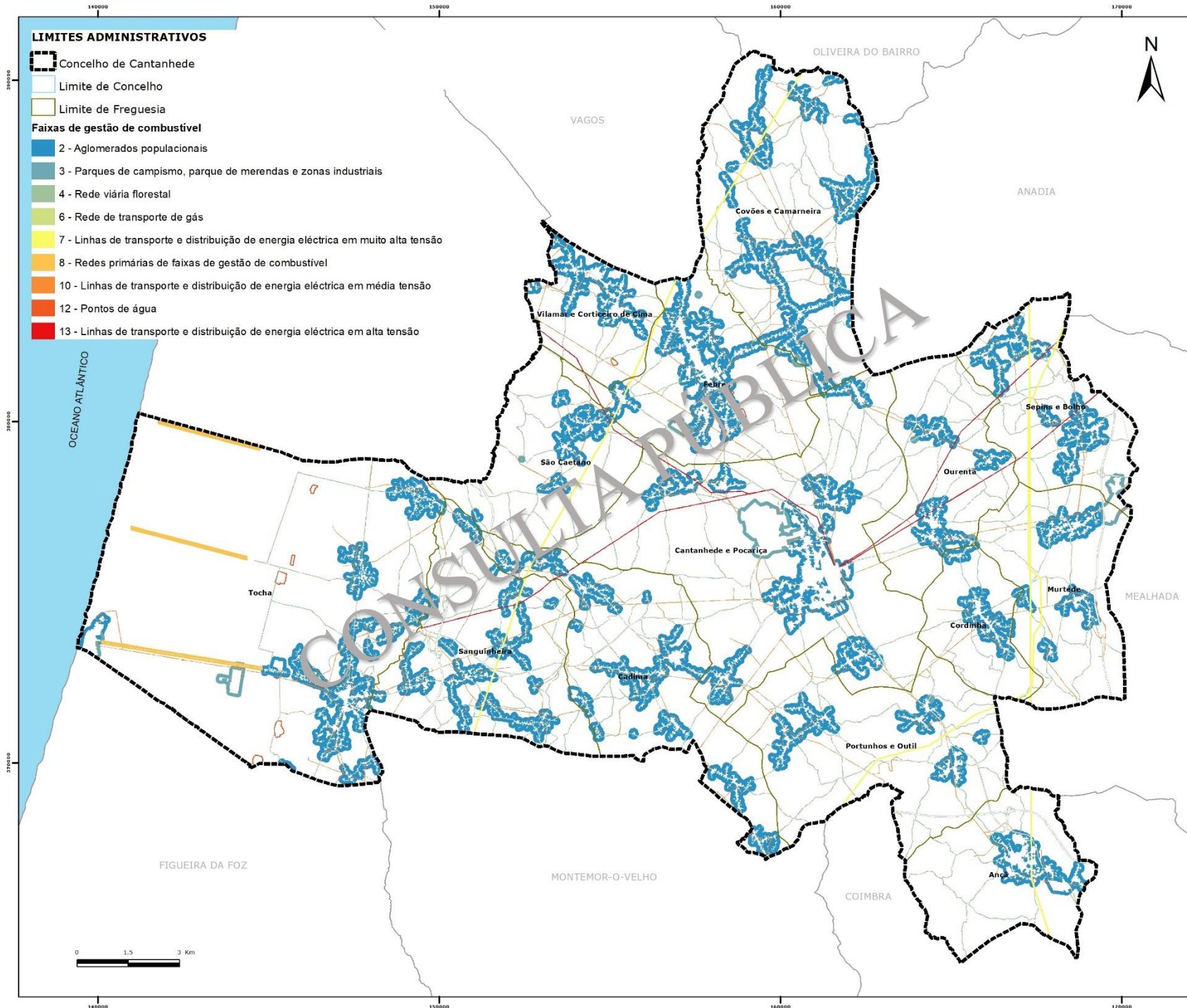


LIMITES ADMINISTRATIVOS

- Concelho de Cantanhede
- Limite de Concelho
- Limite de Freguesia

Faixas de gestão de combustível

- 2 - Aglomerados populacionais
- 3 - Parques de campismo, parque de merendas e zonas industriais
- 4 - Rede viária florestal
- 6 - Rede de transporte de gás
- 7 - Linhas de transporte e distribuição de energia eléctrica em muito alta tensão
- 8 - Redes primárias de faixas de gestão de combustível
- 10 - Linhas de transporte e distribuição de energia eléctrica em média tensão
- 12 - Pontos de água
- 13 - Linhas de transporte e distribuição de energia eléctrica em alta tensão



MAPA DAS FAIXAS DE GESTÃO DE COMBUSTÍVEL DO CONCELHO DE CANTANHEDE

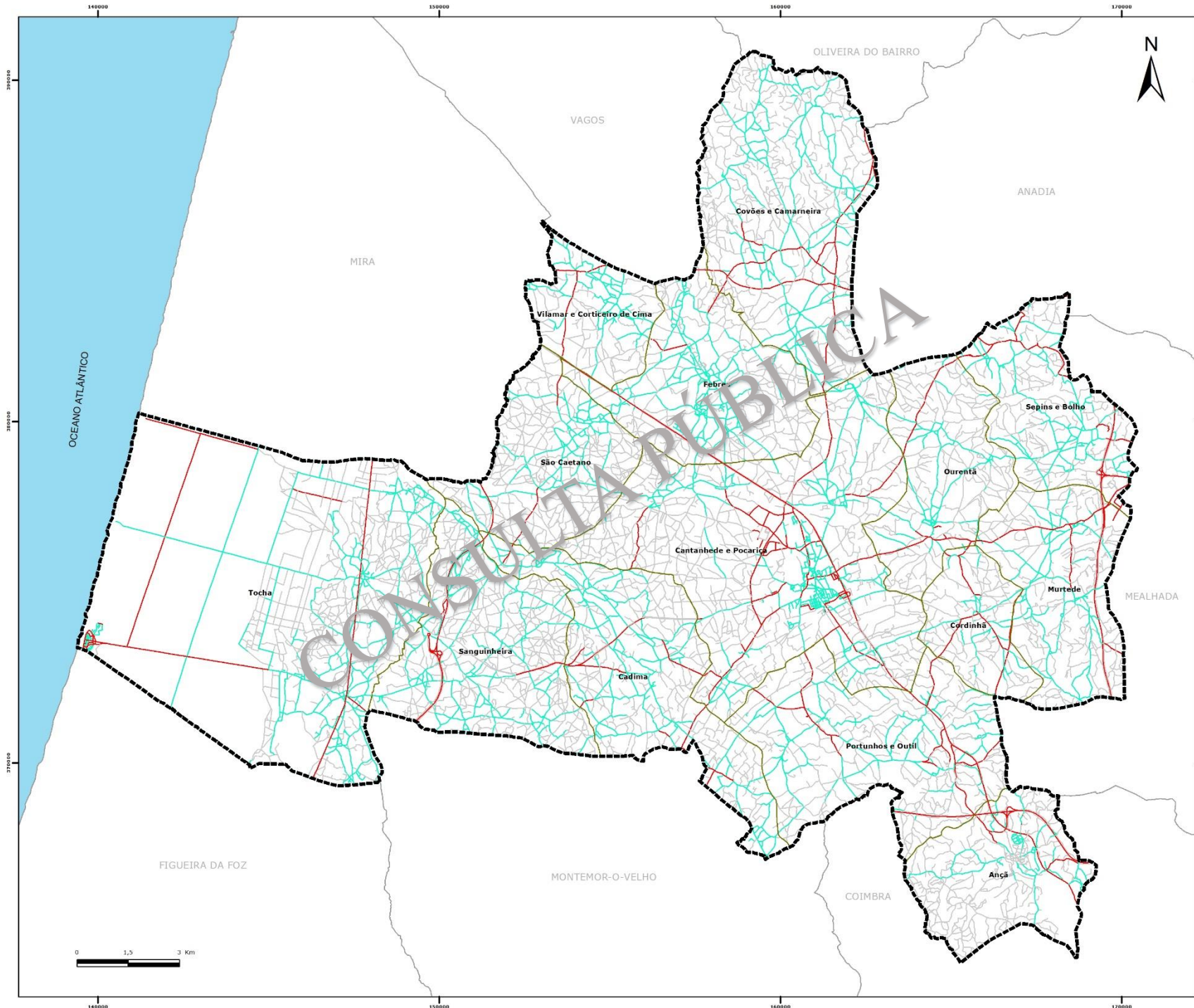
Sistema de coordenadas e de referência
ETRS 1989 Portugal TM06
Transversa de Mercator
ETRS 1989

ELABORAÇÃO: Agosto de 2018

FONTE(S): IGP (2017)



MAPA Nº 22



MAPA D REDE VIÁRIA FLORESTAL DO CONCELHO DE CANTANHEDE



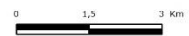
LIMITES ADMINISTRATIVOS

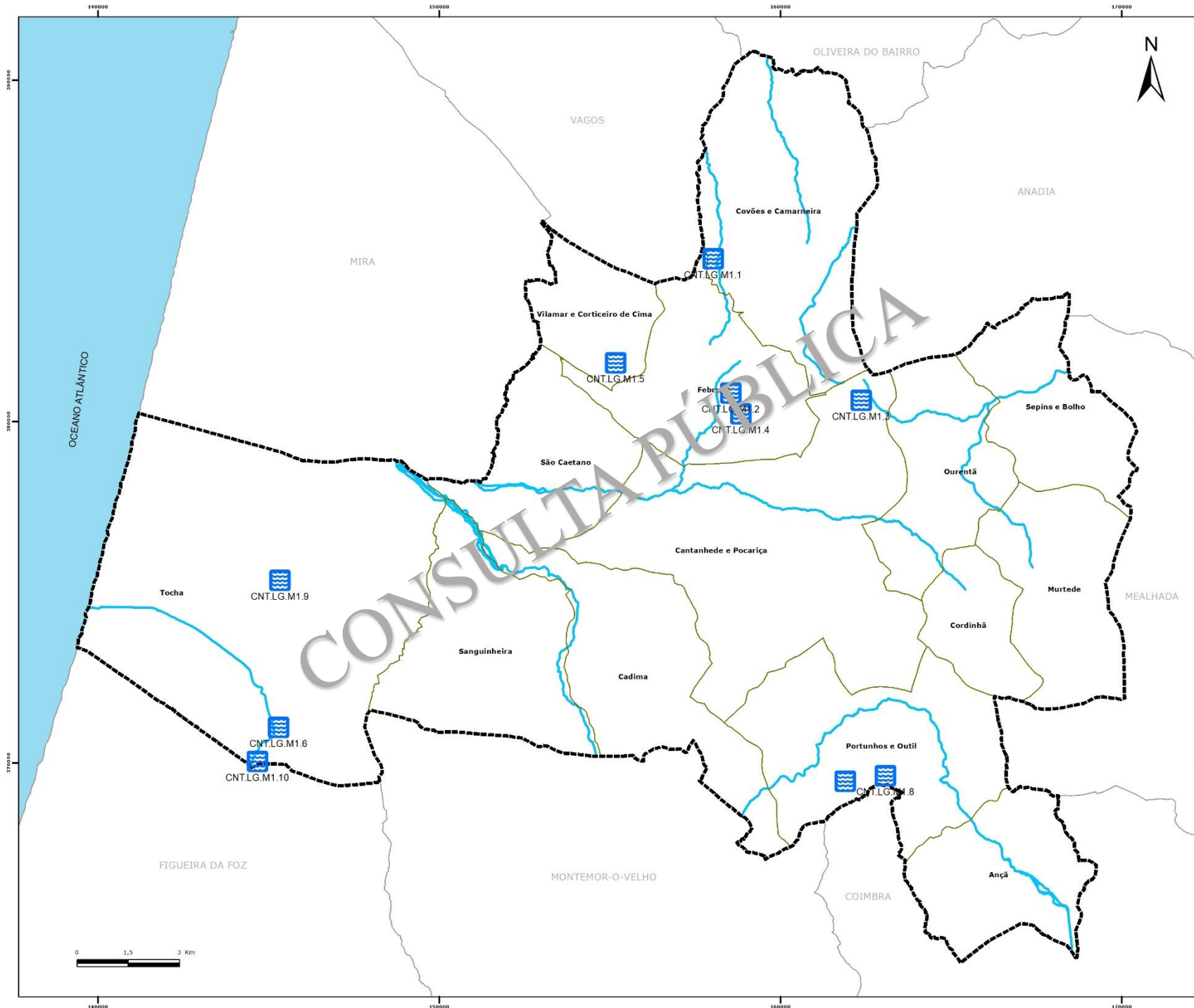
-  Concelho de Cantanhede
 -  Limite de Concelho
 -  Limite de Freguesia
- Rede Viária Florestal**
-  1ª Ordem
 -  2ª Ordem
 -  Complementar

Sistema de coordenadas e de referência
 ETRS 1989 Portugal TM06
 Transversa de Mercator
 ETRS 1989

ELABORAÇÃO: Agosto de 2018






FONTE(S): IGP (2017)





MAPA DA REDE DE PONTOS DE ÁGUA DO CONCELHO DE CANTANHEDE

LIMITES ADMINISTRATIVOS

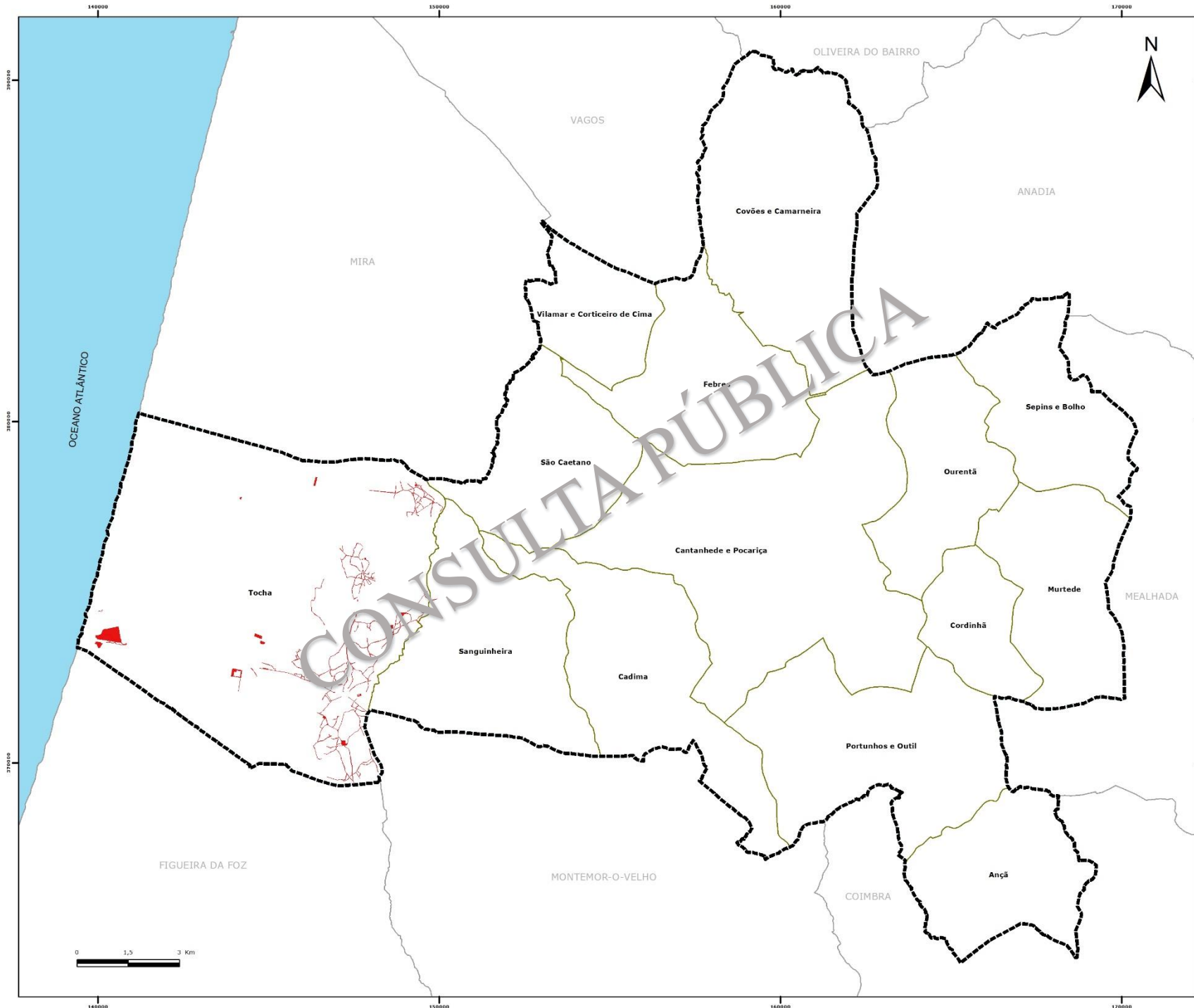
-  Concelho de Cantanhede
-  Limite de Concelho
-  Limite de Freguesia
- Rede de pontos água**
-  Misto
- Rede hidrográfica**
-  Linha de água permanente

Sistema de coordenadas e de referência
 ETRS 1989 Portugal TM06
 Transversa de Mercator
 ETRS 1989

ELABORAÇÃO: Agosto de 2018




FONTE(S): IGP (2017)





MAPA DE SILVICULTURA PREVENTIVA DO CONCELHO DE CANTANHEDE DO ANO DE 2017

LIMITES ADMINISTRATIVOS

-  Concelho de Cantanhede
-  Limite de Concelho
-  Limite de Freguesia

Silvicultura
 14 - 60,46 ha

Sistema de coordenadas e de referência
 ETRS 1989 Portugal TM06
 Transversa de Mercator
 ETRS 1989




ELABORAÇÃO: Agosto de 2018

FONTE(S): IGP (2017)















**MAPA DE FGC E RVF
DO CONCELHO DE
CANTANHEDE PARA O
ANO DE 2019**


LIMITES ADMINISTRATIVOS

-  Concelho de Cantanhede
-  Limite de Concelho
-  Limite de Freguesia

DESC_FGC, INTER_2019, RESP_GC

-  2, CDR, PRIVADO (Área: 274.5 ha)
-  3, CDR, JF (Área: 4.3 ha)
-  3, CDR, CMC (Área: 2.2 ha)
-  4, CDR, CMC (Área: 68.5 ha)
-  4, CDR, BRISA (Área: 38.5 ha)
-  4, CDR, JF (Área: 57.3 ha)
-  4, CDR, IP (Área: 5.5 ha)
-  6, CDR, REN (Área: 0.1 ha)
-  7, CDR, REN (Área: 62.4 ha)
-  8, CDR, CMC (Área: 3.4 ha)
-  8, CDR, ICNF (Área: 135.7 ha)
-  10, CDR, EDP (Área: 40.3 ha)

REDE_DFCl, INTER_2019

-  3, MAN (Compr: 56.2 Km)

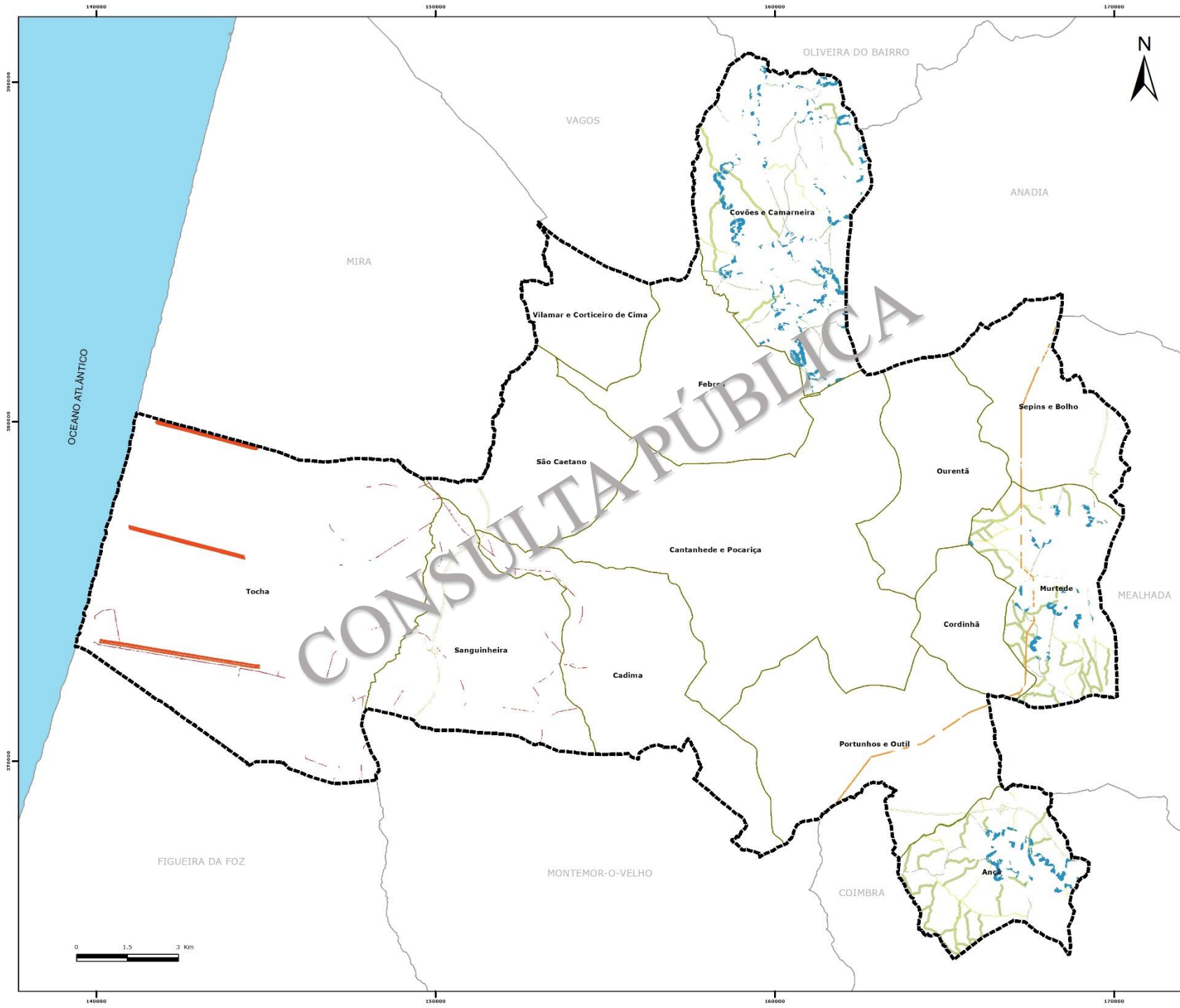
Sistema de coordenadas e de referência
ETRS 1989 Portugal TM06
Transversa de Mercator
ETRS 1989

ELABORAÇÃO: Agosto de 2018

FONTE(S): IGP (2017)



MAPA Nº 26



MAPA DE FGC E RVF DO CONCELHO DE CANTANHEDE PARA O ANO DE 2020

LIMITES ADMINISTRATIVOS

- Concelho de Cantanhede
- Limite de Concelho
- Limite de Freguesia

DESC_FGC, INTER_2020, RESP_GC

- 2, CDR, PRIVADO (Área: 382.3 ha)
- 3, CDR, JF (Área: 6.3 ha)
- 3, CDR, PRIVADO (Área: 5.8 ha)
- 3, CDR, CMC (Área: 36 ha)
- 4, CDR, CMC (Área: 56.7 ha)
- 4, CDR, BRISA (Área: 38.5 ha)
- 4, CDR, JF (Área: 80.9 ha)
- 4, CDR, IP (Área: 9.3 ha)
- 6, CDR, REN (Área: 0.1 ha)
- 7, CDR, REN (Área: 53.1 ha)
- 10, CDR, EDP (Área: 15 ha)
- 12, CDR, JF (Área: 10.7 ha)
- 13, CDR, EDP (Área: 14.6 ha)

REDE_DFCl, INTER_2020

- 2, MAN (Comprí: 1.2 km)
- 3, MAN (Comprí: 23 km)

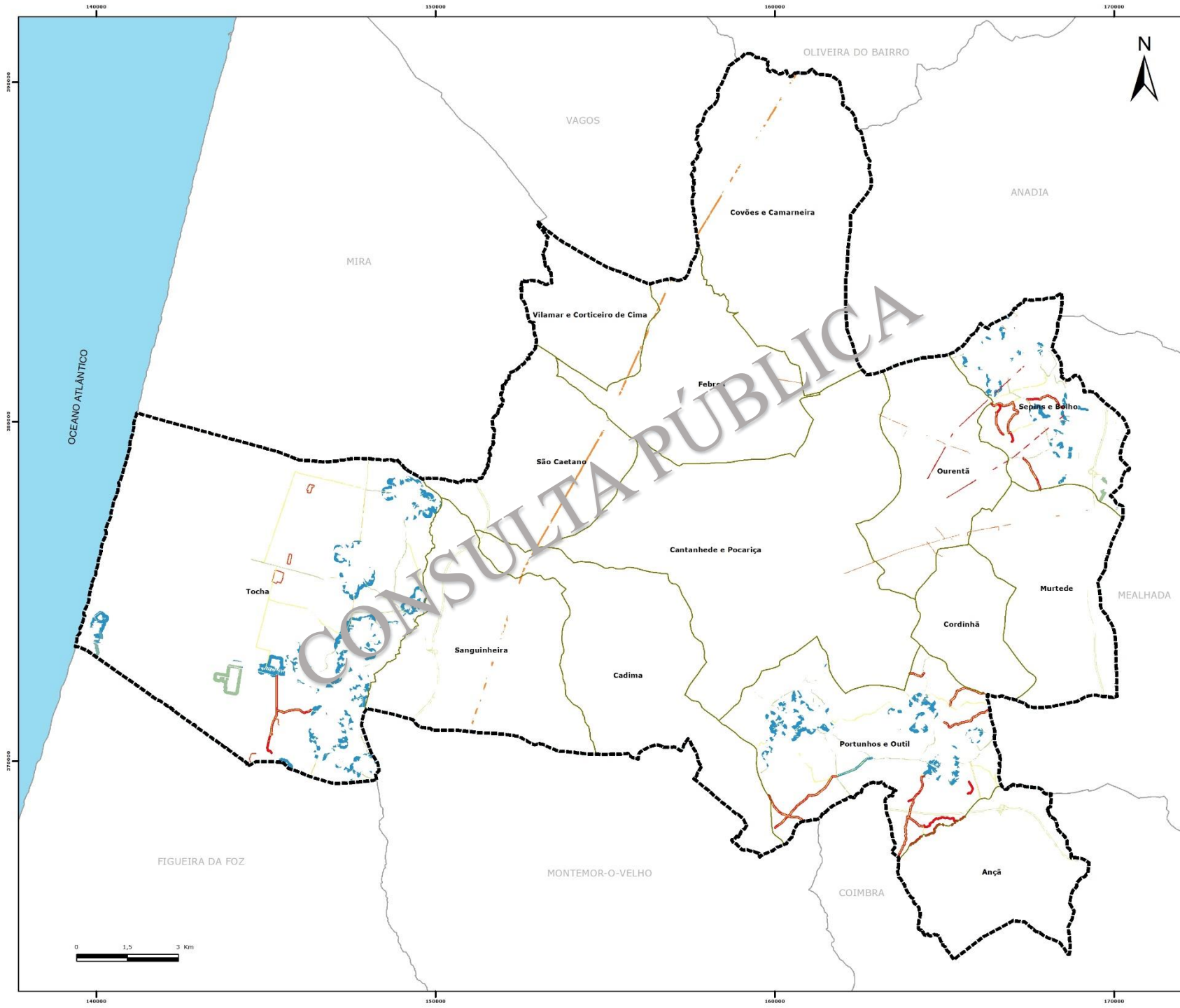
Sistema de coordenadas e de referência
ETRS 1989 Portugal TM06
Transversa de Mercator
ETRS 1989

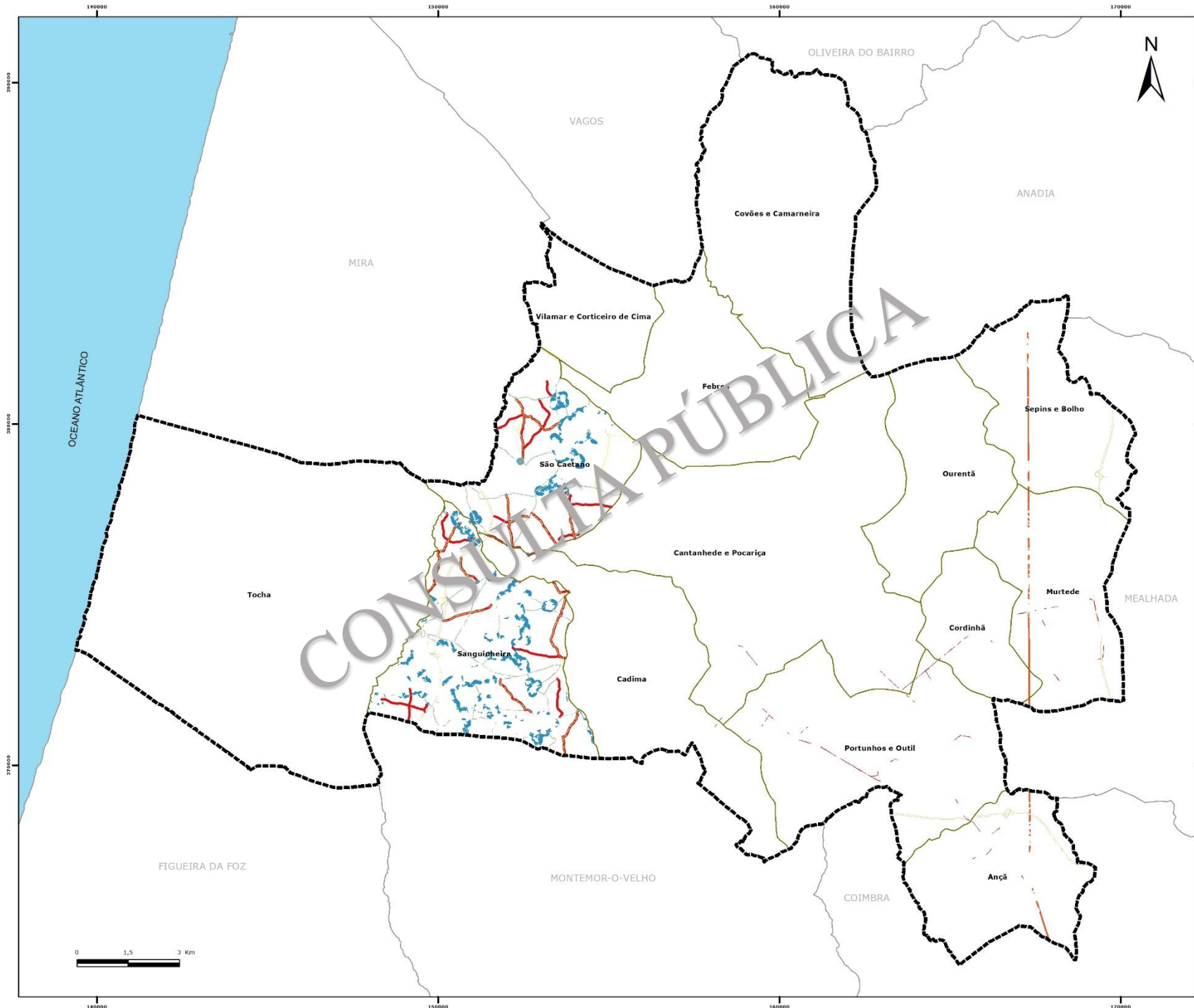
ELABORAÇÃO: Agosto de 2018

FONTE(S): IGP (2017)






MAPA Nº 27








**MAPA DE FGC E RVF
DO CONCELHO DE
CANTANHEDE PARA O
ANO DE 2021**

LIMITES ADMINISTRATIVOS

-  Concelho de Cantanhede
-  Limite de Concelho
-  Limite de Freguesia

DESC_FGC, INTER_2021, RESP_GC

-  2, CDR, PRIVADO (Área: 260.3 ha)
-  3, CDR, JF (Área: 3.2 ha)
-  4, CDR, CMC (Área: 76.3 ha)
-  4, CDR, BRISA (Área: 38.5 ha)
-  4, CDR, JF (Área: 44.1 ha)
-  4, CDR, IP (Área: 1.5 ha)
-  6, CDR, REN (Área: 0.1 ha)
-  7, CDR, REN (Área: 49.8 ha)
-  10, CDR, EDP (Área: 18.6 ha)

REDE_DFCI, INTER_2021

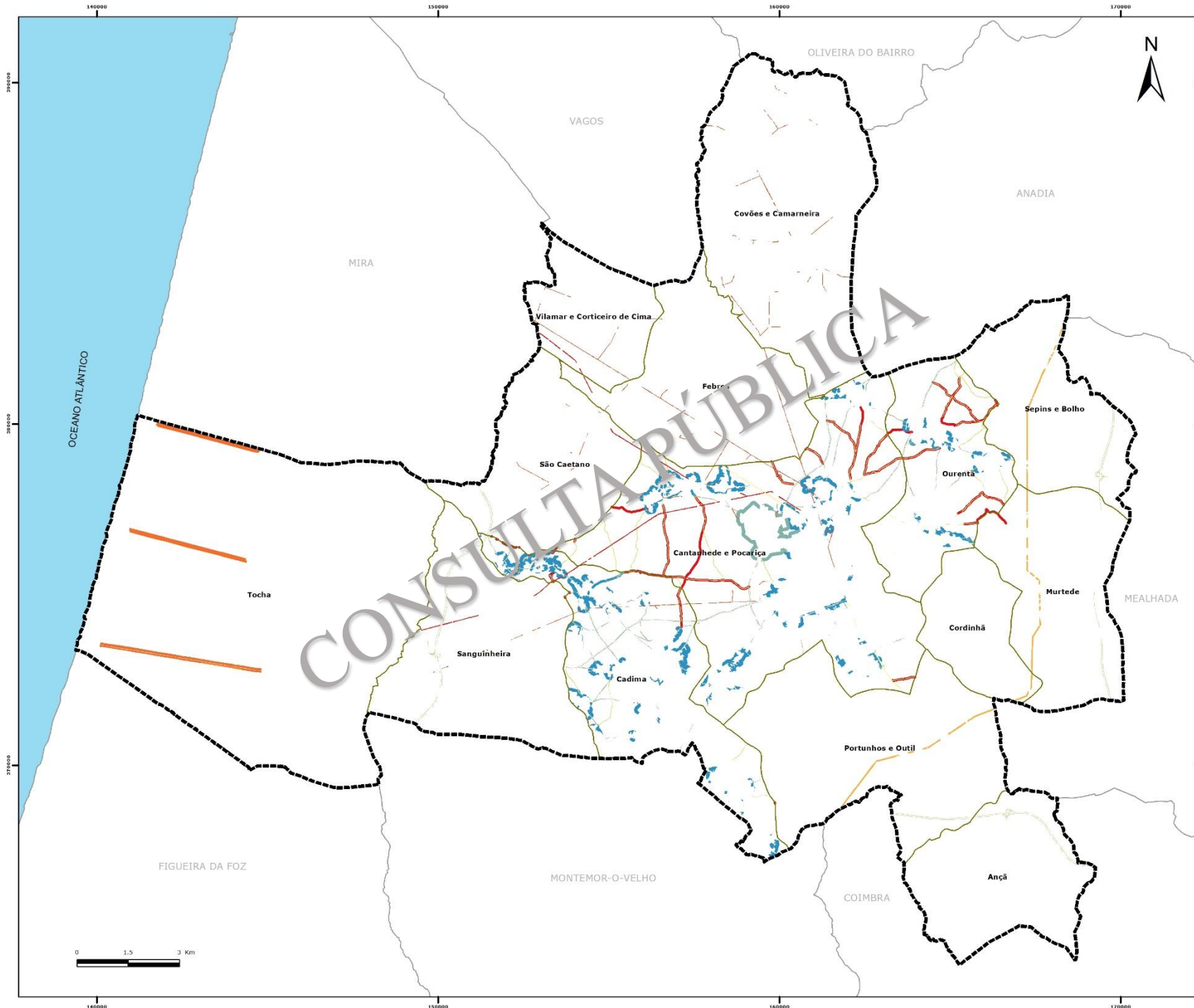
-  2, MAN (Compr: 0.1 km)
-  3, MAN (Compr: 32.2 km)

Sistema de coordenadas e de referência
ETRS 1989 Portugal TM06
Transversa de Mercator
ETRS 1989

ELABORAÇÃO: Agosto de 2018

FONTE(S): IGP (2017)





MAPA DE FGC E RVF DO CONCELHO DE CANTANHEDE PARA O ANO DE 2022

LIMITES ADMINISTRATIVOS

- Concelho de Cantanhede
- Limite de Concelho
- Limite de Freguesia

DESC_FGC, INTER_2022, RESP_GC

- 2, CDR, PRIVAD (Área: 392.1 ha)
- 3, CDR, JF (Área: 4.3 ha)
- 3, CDR, CMC (Área: 54.2 ha)
- 4, CDR, CMC (Área: 85.5 ha)
- 4, CDR, BRISA (Área: 38.5 ha)
- 4, CDR, JF (Área: 91.3 ha)
- 4, CDR, IP (Área: 7.5 ha)
- 6, CDR, REN (Área: 0.1 ha)
- 7, CDR, REN (Área: 62.4 ha)
- 8, CDO, JF (Área: 3.4 ha)
- 8, CDO, ICNF (Área: 135.7 ha)
- 10, CDR, EDP (Área: 62.9 ha)
- 13, CDR, EDP (Área: 36.7 ha)

REDE_DFICI, INTER_2022

- 2, MAN (Compr: 1.3 km)
- 3, MAN (Compr: 32.6 km)

Sistema de coordenadas e de referência
ETRS 1989 Portugal TM06
Transversa de Mercator
ETRS 1989




ELABORAÇÃO: Agosto de 2018

FONTE(S): IGP (2017)







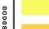






**MAPA DE FGC E RVF
DO CONCELHO DE
CANTANHEDE PARA O
ANO DE 2023**

LIMITES ADMINISTRATIVOS

-  Concelho de Cantanhede
-  Limite de Concelho
-  Limite de Freguesia

DESC_FGC, INTER_2023, RESP_GC

-  2, CDR, PRIVADO (Área: 187.8 ha)
-  3, CDR, JF (Área: 7.6 ha)
-  3, CDR, CMC (Área: 16.8 ha)
-  4, CDR, CMC (Área: 27.3 ha)
-  4, CDR, BRISA (Área: 38.5 ha)
-  4, CDR, JF (Área: 37.4 ha)
-  4, CDR, IP (Área: 9.1 ha)
-  6, CDR, REN (Área: 0.1 ha)
-  7, CDR, REN (Área: 53.1 ha)
-  10, CDR, EDP (Área: 40.3 ha)
-  12, CDR, JF (Área: 4.1 ha)

REDE_DFCI, INTER_2023

-  2, MAN (Compr: 0.1 km)
-  3, MAN (Compr: 19.7 km)

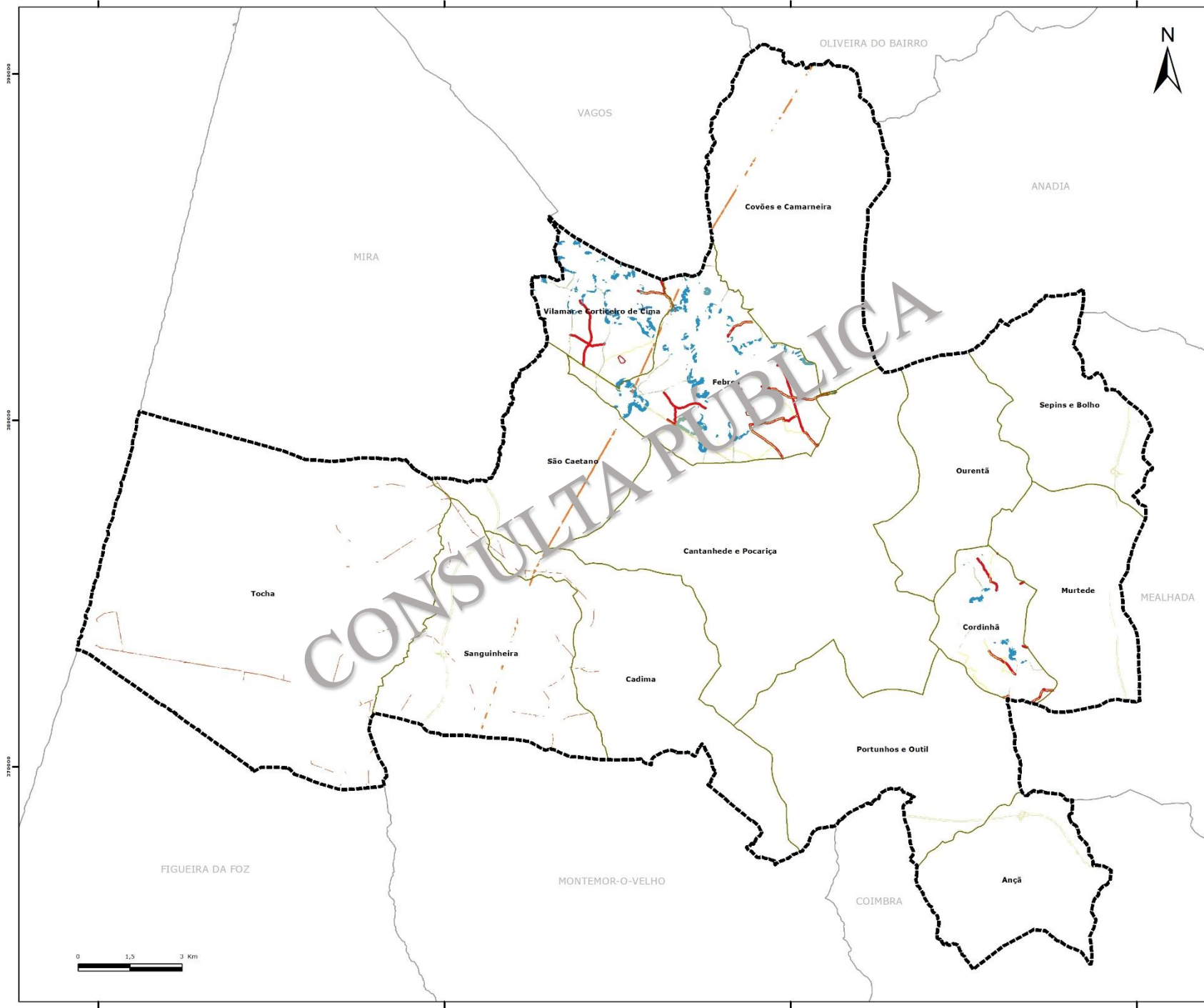
Sistema de coordenadas e de referência
ETRS 1989 Portugal TM06
Transversa de Mercator
ETRS 1989

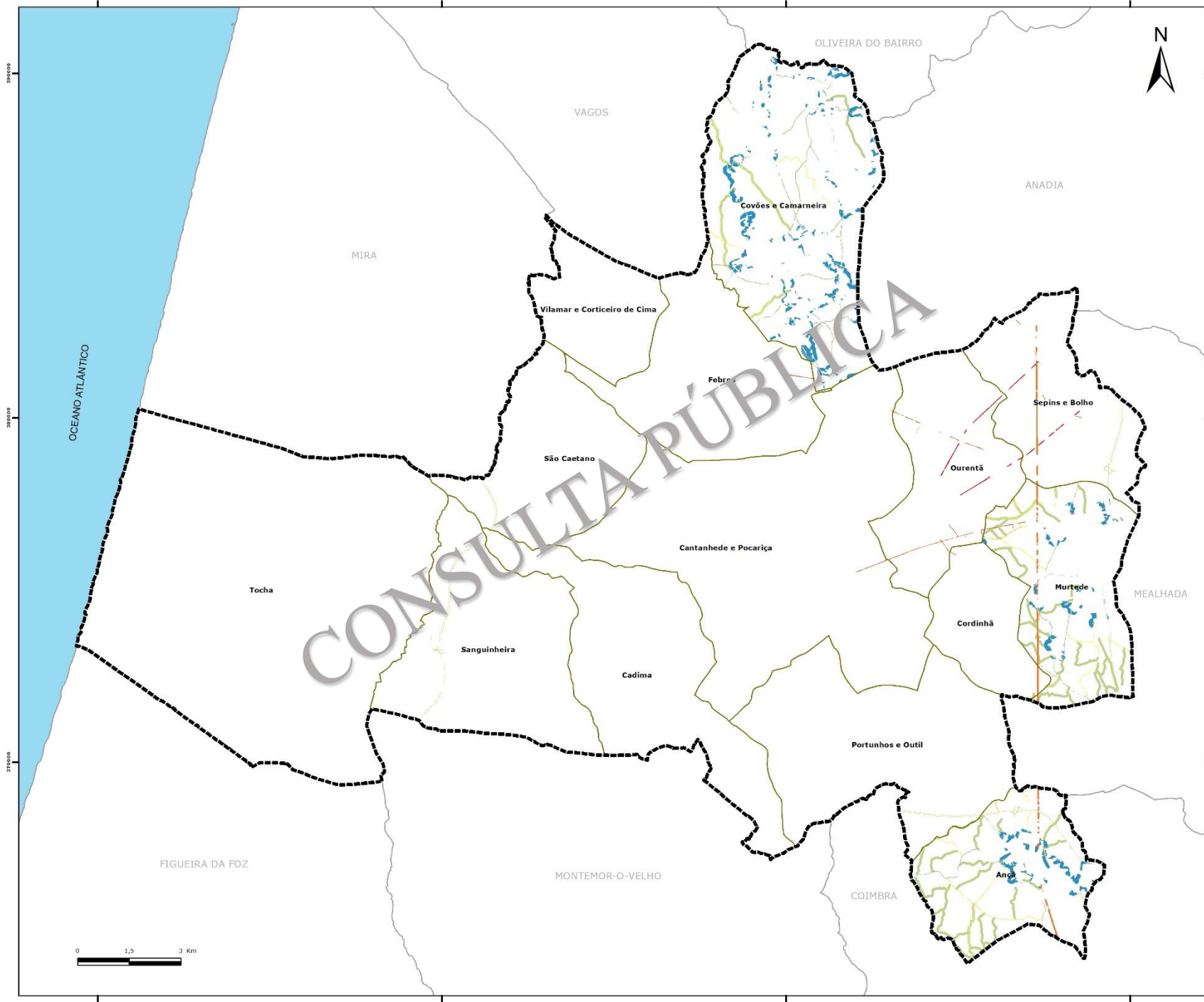
ELABORAÇÃO: Agosto de 2018

FONTE(S): IGP (2017)



MAPA Nº 30





MAPA DE FGC E RVF DO CONCELHO DE CANTANHEDE PARA O ANO DE 2024



LIMITES ADMINISTRATIVOS

- Concelho de Cantanhede
- Limite de Concelho
- Limite de Freguesia

DESC_FGC, INTER_2024, RESP_GC

- 2, CDR, PRIVADO (Área: 274.5 ha)
- 3, CDR, JF (Área: 7.6 ha)
- 3, CDR, CMC (Área: 16.8 ha)
- 4, CDR, CMC (Área: 68.5 ha)
- 4, CDR, BRISA (Área: 38.5 ha)
- 4, CDR, JF (Área: 57.3 ha)
- 4, CDR, IP (Área: 5.5 ha)
- 6, CDR, REN (Área: 0.1 ha)
- 7, CDR, REN (Área: 49.8 ha)
- 10, CDR, EDP (Área: 15 ha)
- 13, CDR, EDP (Área: 14.6 ha)

REDE_DFCl, INTER_2024

- 3, MAN (Compr: 58.2 km)

Sistema de coordenadas e de referência
ETRS 1989 Portugal TM06
Transversa de Mercator
ETRS 1989




ELABORAÇÃO: Agosto de 2018

FONTE(S): IGP (2017)

















MAPA DE FGC E RVF DO CONCELHO DE CANTANHEDE PARA O ANO DE 2025

LIMITES ADMINISTRATIVOS

-  Concelho de Cantanhede
-  Limite de Concelho
-  Limite de Freguesia

DESC_FGC, INTER_2025, RESP_GC

-  2, CDR, PRIVADO (Área: 382.3 ha)
-  3, CDR, JF (Área: 6.3 ha)
-  3, CDR, PRIVADO (Área: 5.8 ha)
-  3, CDR, CMC (Área: 36 ha)
-  4, CDR, CMC (Área: 56.7 ha)
-  4, CDR, BRISA (Área: 38.5 ha)
-  4, CDR, JF (Área: 80.9 ha)
-  4, CDR, IP (Área: 9.3 ha)
-  6, CDR, REN (Área: 0.1 ha)
-  7, CDR, REN (Área: 62.4 ha)
-  8, CDO, JF (Área: 3.4 ha)
-  8, CDO, ICNF (Área: 135.7 ha)
-  10, CDR, EDP (Área: 18.6 ha)
-  12, CDR, JF (Área: 10.7 ha)

REDE_DFICI, INTER_2025

-  2, MAN (Compr: 1.2 km)
-  3, MAN (Compr: 23 km)

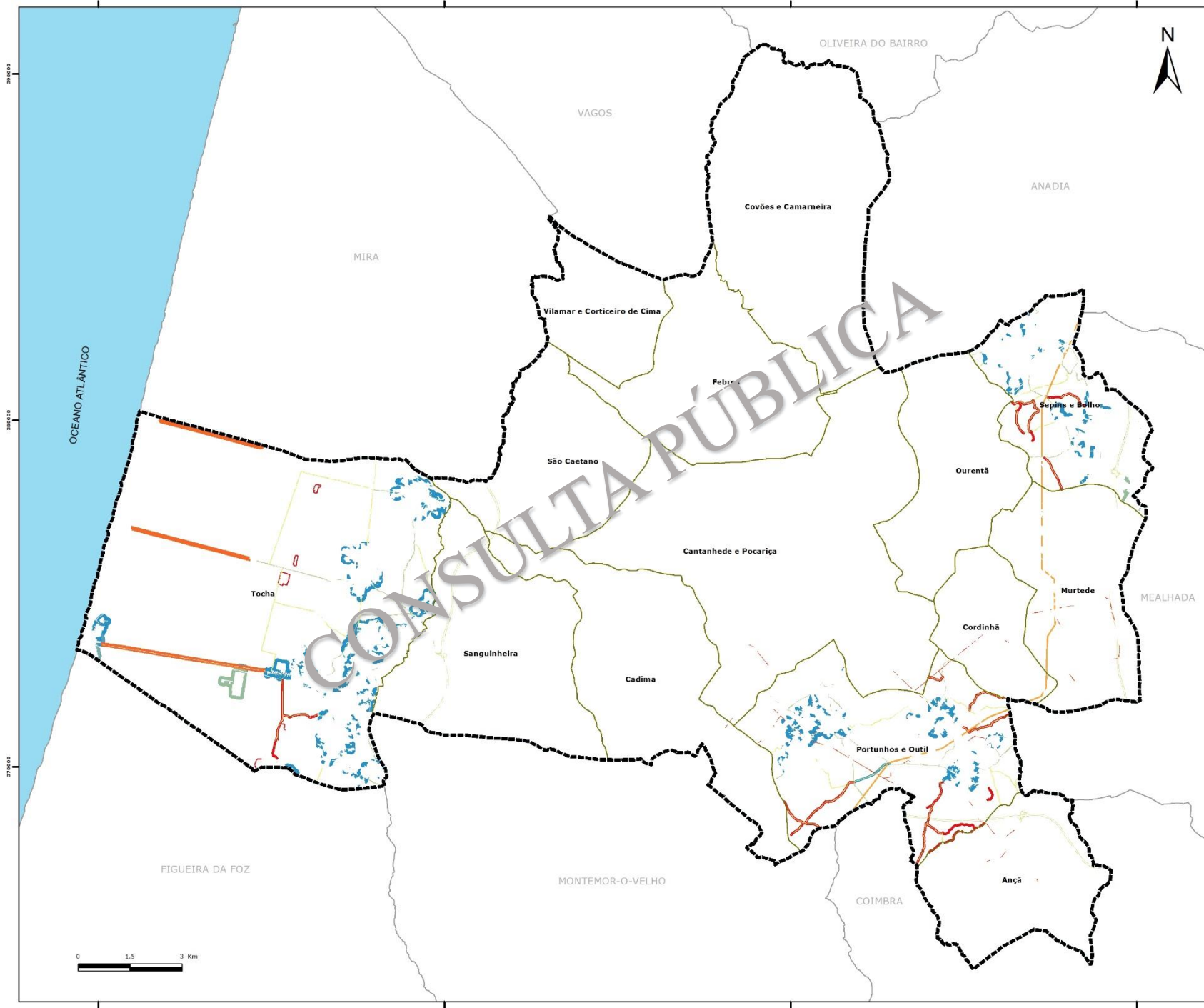
Sistema de coordenadas e de referência
ETRS 1989 Portugal TM06
Transversa de Mercator
ETRS 1989

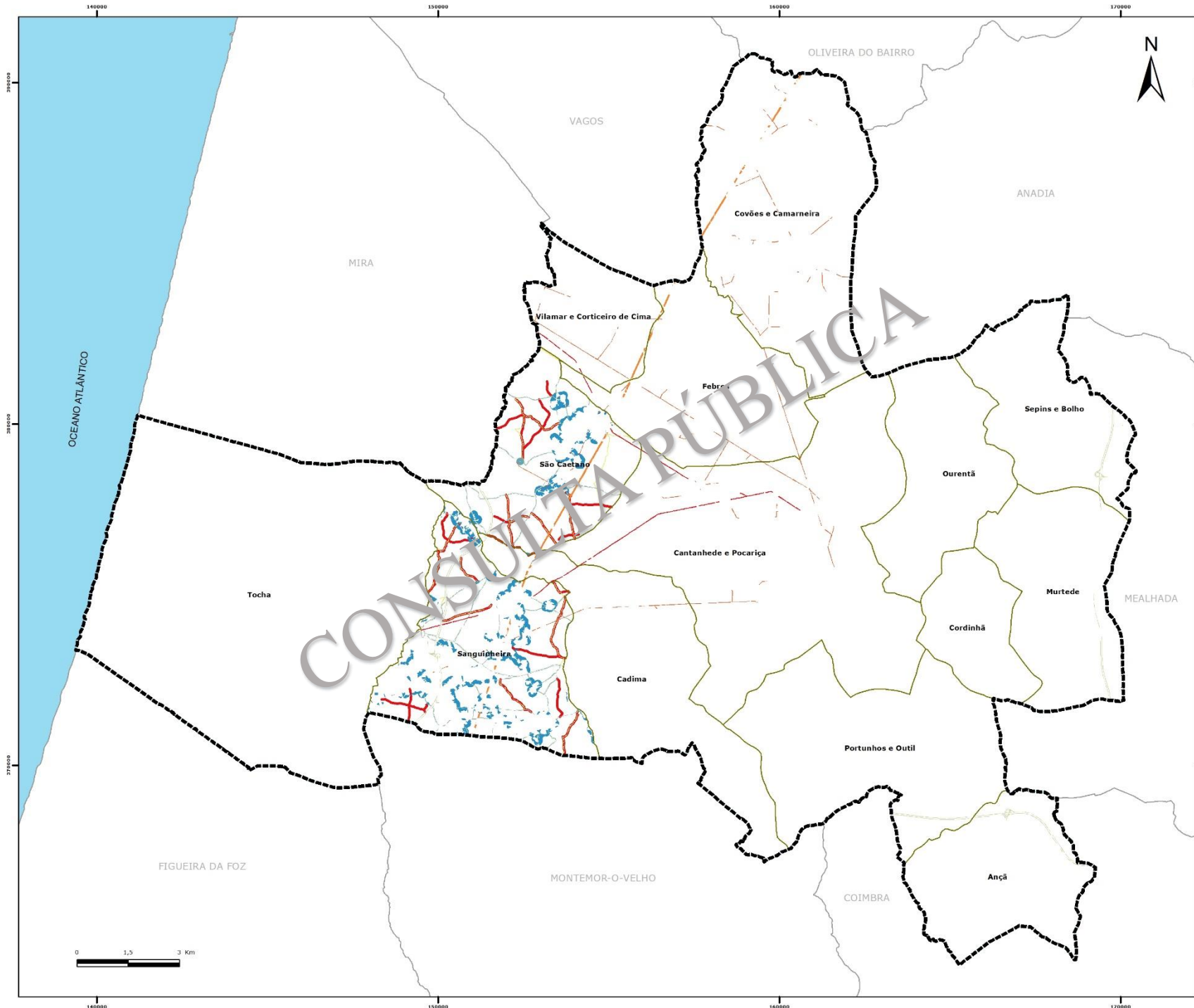
ELABORAÇÃO: Agosto de 2018

FONTE(S): IGP (2017)






MAPA Nº 32















**MAPA DE FGC E RVF
DO CONCELHO DE
CANTANHEDE PARA O
ANO DE 2026**

LIMITES ADMINISTRATIVOS

-  Concelho de Cantanhede
-  Limite de Concelho
-  Limite de Freguesia

DESC_FGC, INTER_2026, RESP_GC

-  2, CDR, PRIVADO (Área: 260.3 ha)
-  3, CDR, JF (Área: 3.2 ha)
-  4, CDR, CMC (Área: 76.3 ha)
-  4, CDR, BRISA (Área: 38.5 ha)
-  4, CDR, JF (Área: 44.1 ha)
-  4, CDR, IP (Área: 1.5 ha)
-  6, CDR, REN (Área: 0.1 ha)
-  7, CDR, REN (Área: 53.1 ha)
-  10, CDR, EDP (Área: 62.9 ha)
-  13, CDR, EDP (Área: 36.7 ha)

REDE_DFCI, INTER_2026

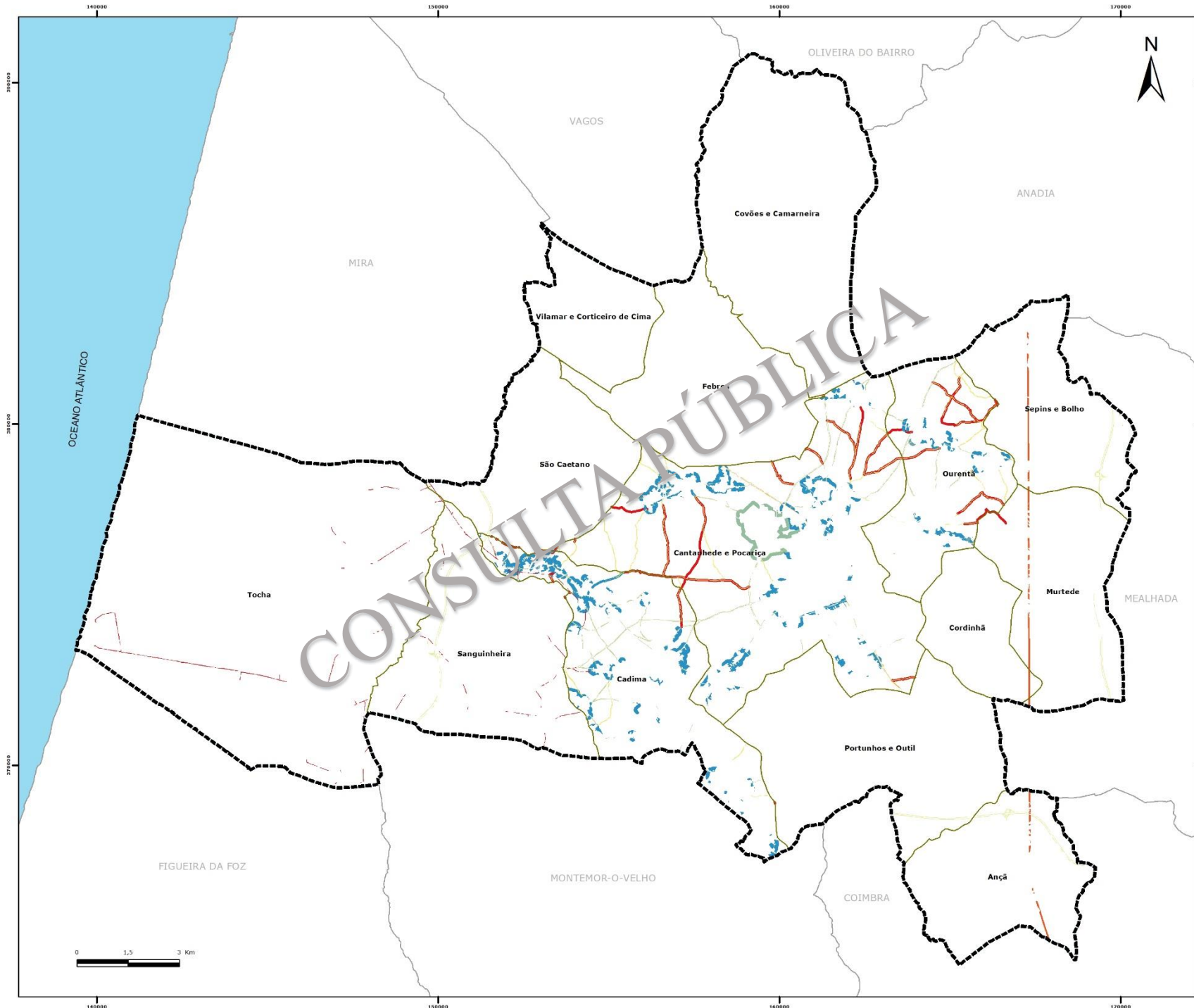
-  2, MAN (Compr: 0.1 km)
-  3, MAN (Compr: 32.2 km)

Sistema de coordenadas e de referência
ETRS 1989 Portugal TM06
Transversa de Mercator
ETRS 1989

ELABORAÇÃO: Agosto de 2018

FONTE(S): IGP (2017)


















**MAPA DE FGC E RVF
DO CONCELHO DE
CANTANHEDE PARA O
ANO DE 2027**



LIMITES ADMINISTRATIVOS

-  Concelho de Cantanhede
-  Limite de Concelho
-  Limite de Freguesia

DESC_FGC, INTER_2027, RESP_GC

-  2, CDR, PRIVADO (Área: 392.1 ha)
-  3, CDR, JF (Área: 4.3 ha)
-  3, CDR, CMC (Área: 54.2 ha)
-  4, CDR, CMC (Área: 85.5 ha)
-  4, CDR, BRISA (Área: 38.5 ha)
-  4, CDR, JF (Área: 91.3 ha)
-  4, CDR, IP (Área: 7.5 ha)
-  6, CDR, REN (Área: 0.1 ha)
-  7, CDR, REN (Área: 49.8 ha)
-  10, CDR, EDP (Área: 40.3 ha)

REDE_DFCl, INTER_2027

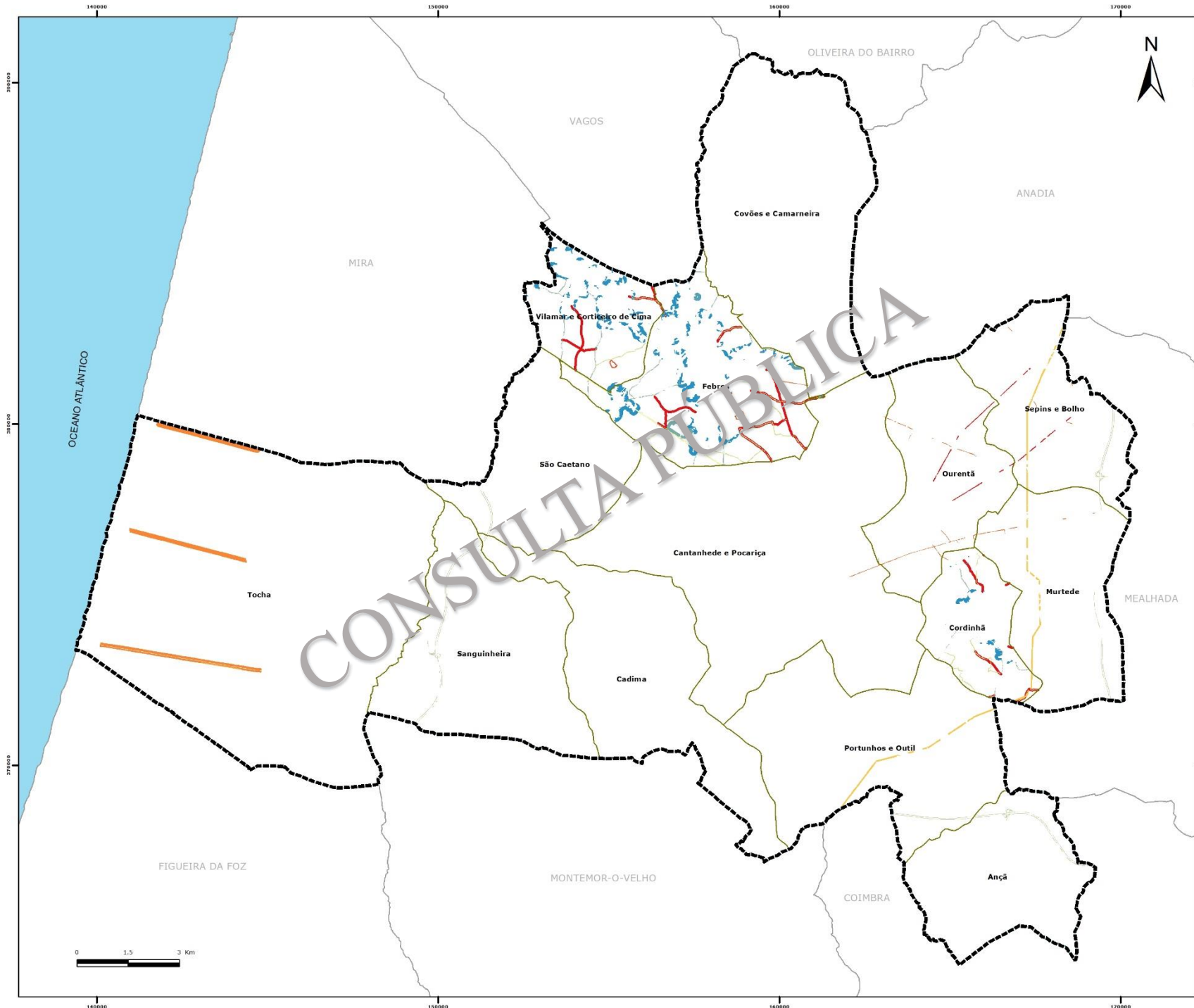
-  2, MAN (Compr: 1.3 km)
-  3, MAN (Compr: 32.6 km)

Sistema de coordenadas e de referência
ETRS 1989 Portugal TM06
Transversa de Mercator
ETRS 1989

ELABORAÇÃO: Agosto de 2018




FONTE(S): IGP (2017)



















MAPA DE FGC E RVF DO CONCELHO DE CANTANHEDE PARA O ANO DE 2028

LIMITES ADMINISTRATIVOS

-  Concelho de Cantanhede
-  Limite de Concelho
-  Limite de Freguesia

DESC_FGC, INTER_2028, RESP_GC

-  2, CDR, PRIVADO (Área: 187.8 ha)
-  3, CDR, JF (Área: 7.6 ha)
-  3, CDR, CMC (Área: 16.8 ha)
-  4, CDR, CMC (Área: 27.3 ha)
-  4, CDR, BRISA (Área: 38.5 ha)
-  4, CDR, JF (Área: 37.4 ha)
-  4, CDR, IP (Área: 9.1 ha)
-  6, CDR, REN (Área: 0.1 ha)
-  7, CDR, REN (Área: 62.4 ha)
-  8, CDO, JF (Área: 3.4 ha)
-  8, CDO, ICNF (Área: 135.7 ha)
-  10, CDR, EDP (Área: 15 ha)
-  12, CDR, JF (Área: 4.1 ha)
-  13, CDR, EDP (Área: 14.6 ha)

REDE_DFICI, INTER_2028

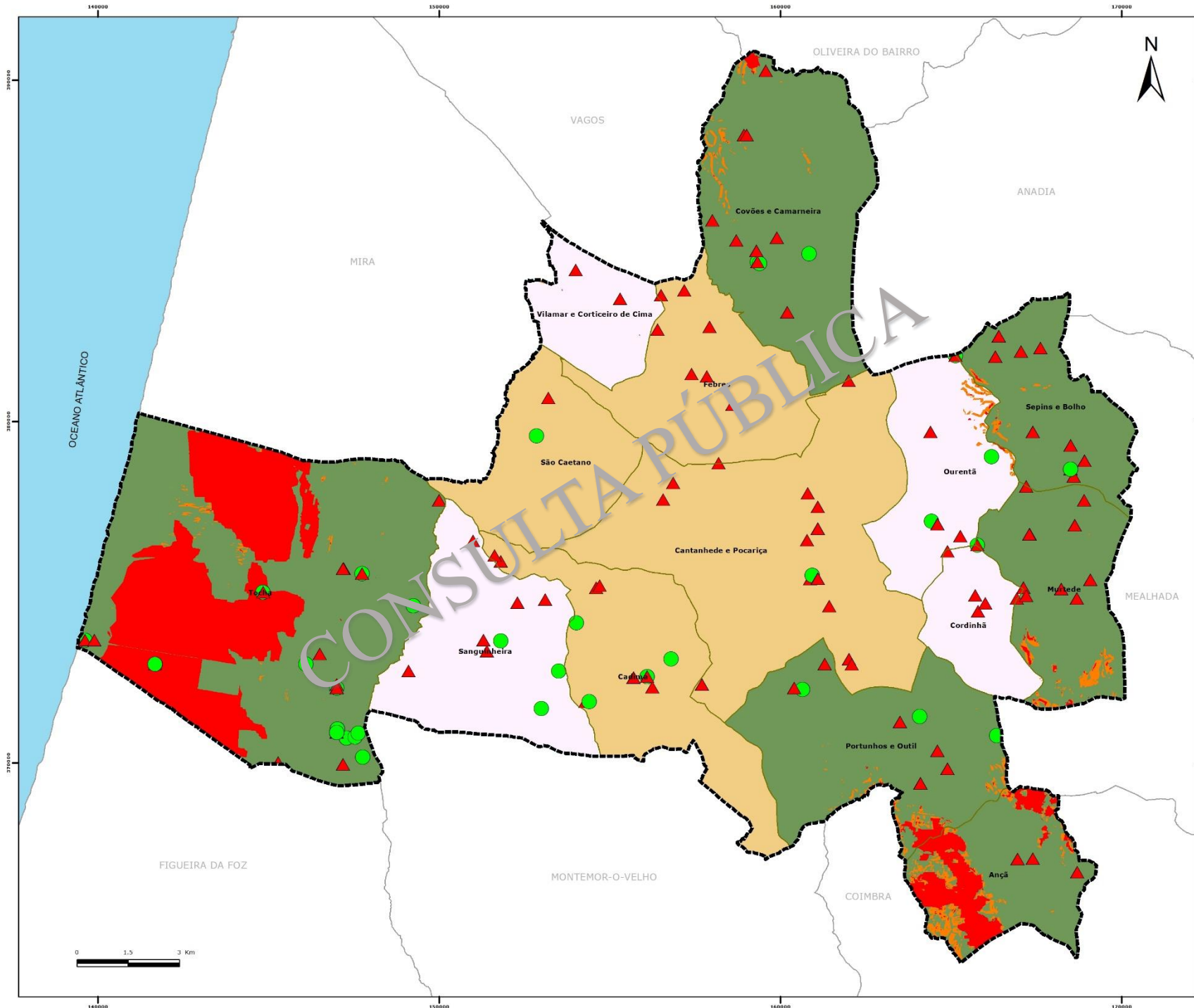
-  2, MAN (Compr: 0.1 km)
-  3, MAN (Compr: 19.7 km)

Sistema de coordenadas e de referência
ETRS 1989 Portugal TM06
Transversa de Mercator
ETRS 1989

ELABORAÇÃO: Agosto de 2018

FONTE(S): IGP (2017)





MAPA DE FISCALIZAÇÃO DO CONCELHO DE CANTANHEDE

LIMITES ADMINISTRATIVOS

- Concelho de Cantanhede
- Limite de Concelho
- Limite de Freguesia

Tipo de Causa

- Intencional
- Negligente

Perigosidade

- Alta
- Muito alta

Dissuasão / Fiscalização

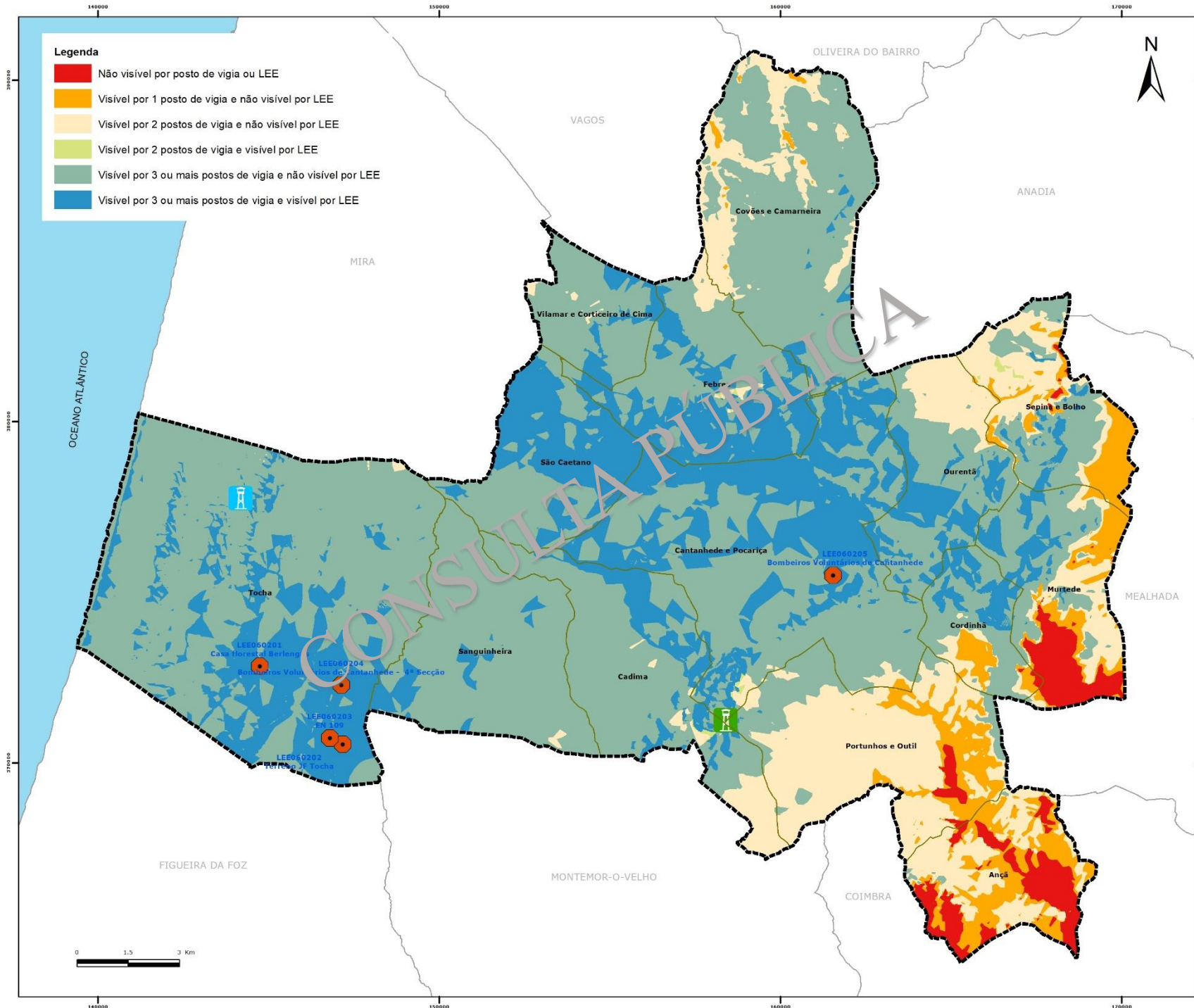
- Nível 1
- Nível 2
- Nível 3

Sistema de coordenadas e de referência
 ETRS 1989 Portugal TM06
 Transversa de Mercator
 ETRS 1989

ELABORAÇÃO: Agosto de 2018

FONTE(S): IGP (2017)



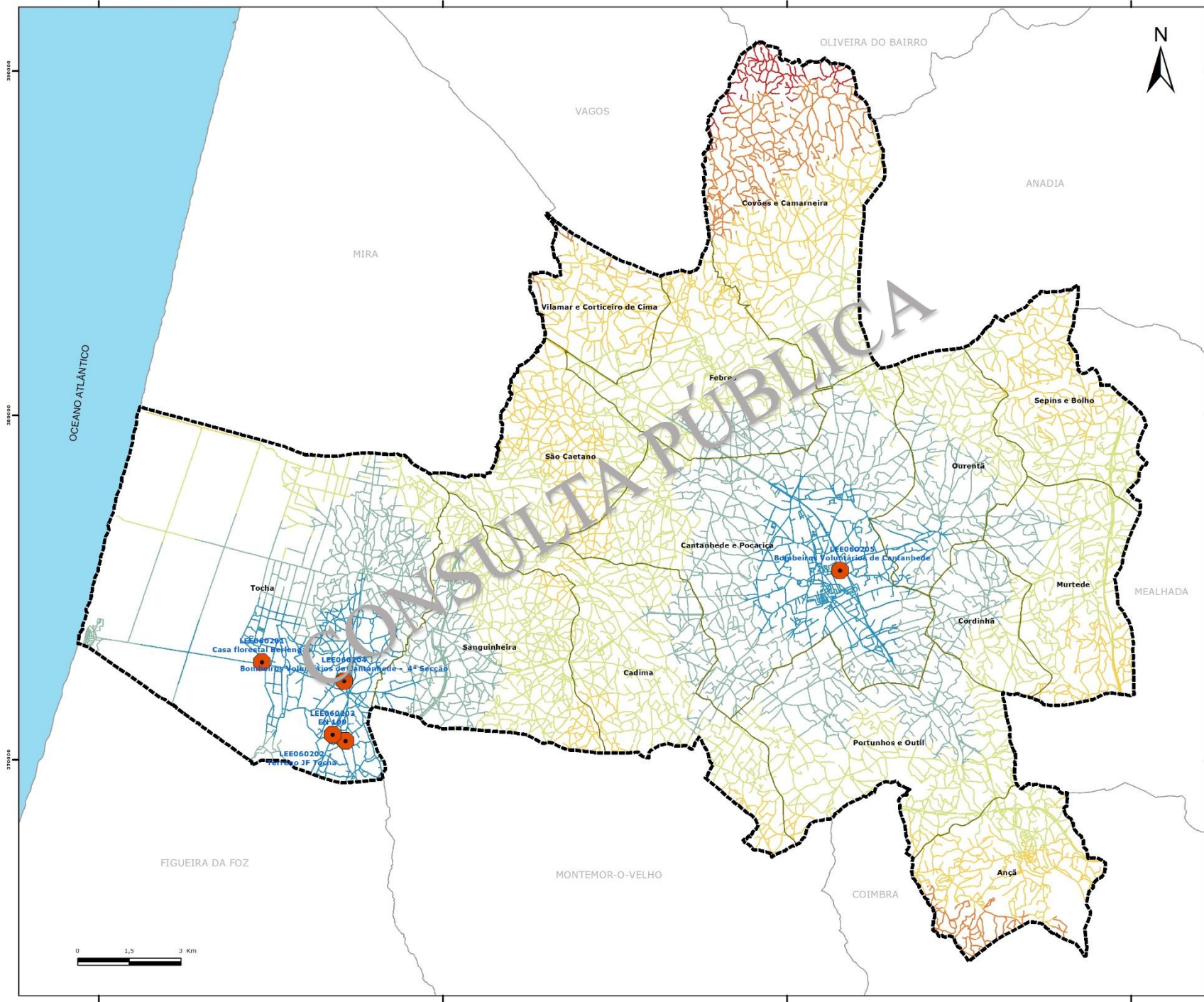


MAPA DE REDE DE VIGILÂNCIA E DETEÇÃO DE INCÊNDIOS DO CONCELHO CANTANHEDE



OCEANO ATLÂNTICO





MAPA DE TEMPOS DE CHEGADA PARA 1.ª INTERVENÇÃO DO CONCELHO CANTANHEDE - LOCAIS ESTRATÉGICOS DE ESTACIONAMENTO (LEE)

LIMITES ADMINISTRATIVOS

- Concelho de Cantanhede
- Limite de Concelho
- Limite de Freguesia

LEE

- LEE

Tempo de chegada (minutos)

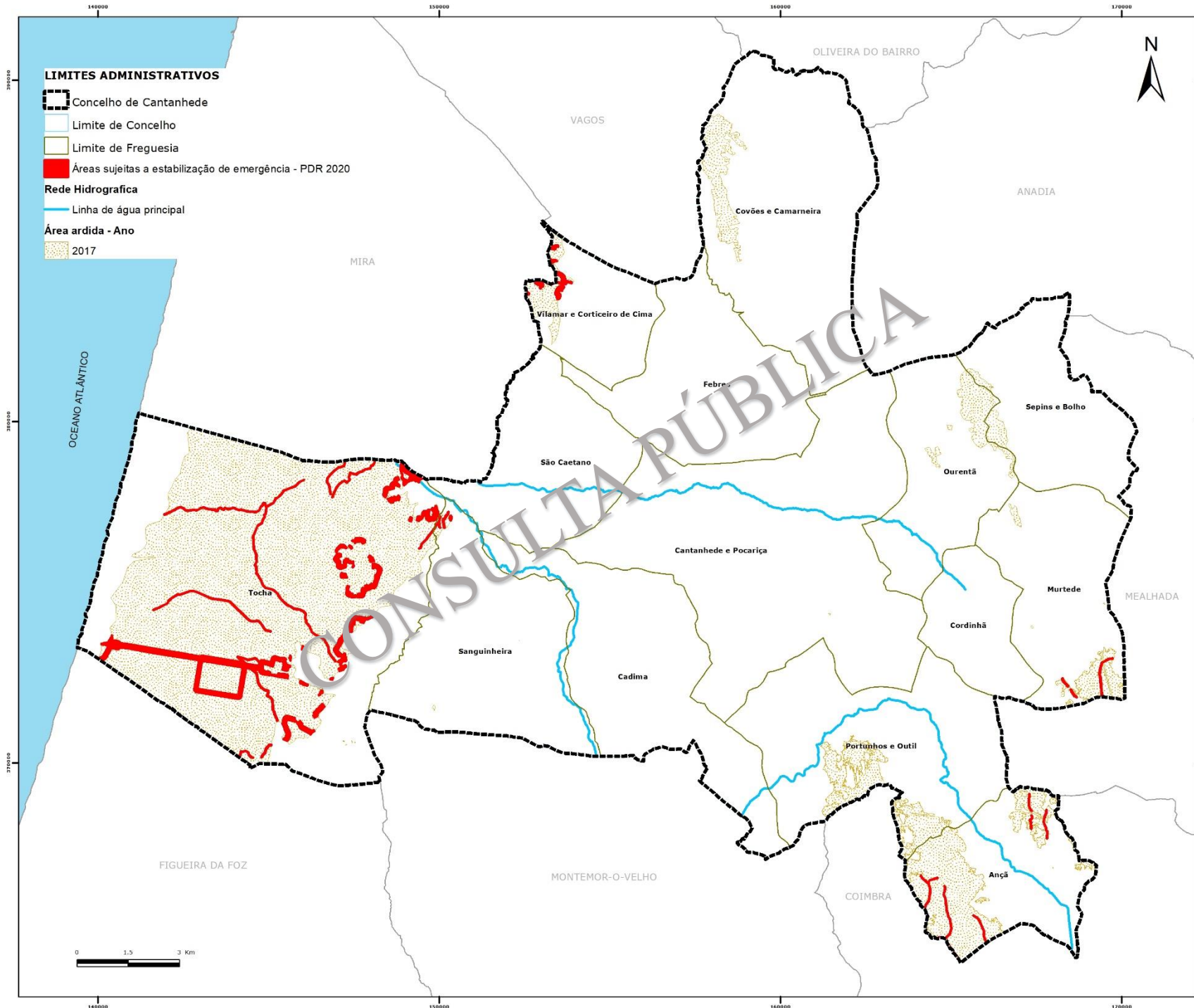
-] 0-5 minutos]
-] 5-10 minutos]
-] 10-15 minutos]
-] 15-20 minutos]
-] 20-30 minutos]
-] 30-60 minutos]

Sistema de coordenadas e de referência
ETRS 1989 Portugal TM06
Transversa de Mercator
ETRS 1989

ELABORAÇÃO: Agosto de 2018

FONTE(S): IGP (2017)





LIMITES ADMINISTRATIVOS

- Concelho de Cantanhede
 - Limite de Concelho
 - Limite de Freguesia
 - Áreas sujeitas a estabilização de emergência - PDR 2020
- Rede Hidrográfica**
- Linha de água principal
- Área ardida - Ano**
- 2017

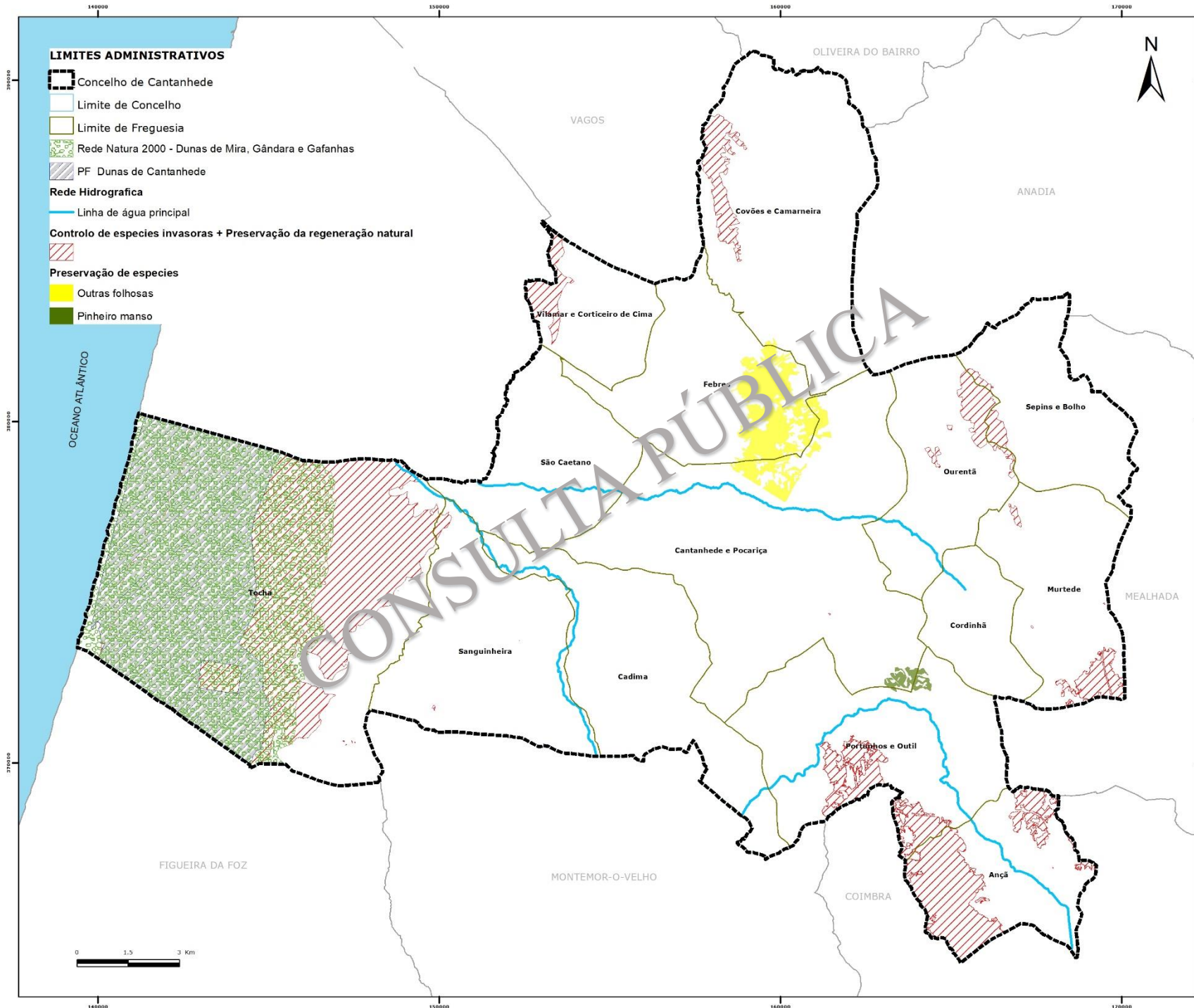
MAPA DE ESTABILIZAÇÃO DE EMERGÊNCIA DO CONCELHO CANTANHEDE

Sistema de coordenadas e de referência
 ETRS 1989 Portugal TM06
 Transversa de Mercator
 ETRS 1989

ELABORAÇÃO: Agosto de 2018

FONTE(S): IGP (2017)





LIMITES ADMINISTRATIVOS

- Concelho de Cantanhede
- Limite de Concelho
- Limite de Freguesia
- Rede Natura 2000 - Dunas de Mira, Gândara e Gafanhas
- PF Dunas de Cantanhede

Rede Hidrográfica

- Linha de água principal

Controlo de espécies invasoras + Preservação da regeneração natural

-

Preservação de espécies

- Outras folhosas
- Pinheiro manso

MAPA DE REABILITAÇÃO DE POVOAMENTOS E HABITATS FLORESTAIS DO CONCELHO CANTANHEDE

Sistema de coordenadas e de referência
 ETRS 1989 Portugal TM06
 Transversa de Mercator
 ETRS 1989

ELABORAÇÃO: Agosto de 2018

FONTE(S): IGP (2017)

